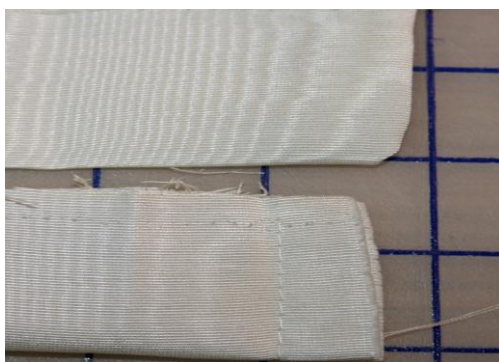


## How to Measure for Pleats & Sew Pleated Placemat

1. Measure finished length need for pleating
2. Placemat was 48" (both sides and top)
3. Using 1" pleat – requires 3 inches of fabric (Example Below)
4.  $48" \times 3" = 144" + \frac{1}{2}"$  seam allowance at each end of fabric = 145" for a finished 48" strip of pleating
5. The finish width of the pleat is going to be 1.5 inches
6. Take the  $1.5 + 1/2"$  seam allowance = 2"
7. Double fabric for pleat  $2" \times 2" = 4"$  wide.
8. Finish cut will be 145" long by 4" wide
9. Fold in have right sides together, seam  $1/2$  seam , turn right sides out and serge or zig zag the raw edges and begin pleating.



## Sewing Placemat

1. Design a Pattern from paper or extra lining
2. Cut front, back and interlining if needed
3. Sew interlining if needed to wrong side of the front piece of placemat fabric.
4. Sew Pleated strip to right side of front piece of fabric
5. Sew both booth front and back together placing right sides of fabric facing each other.
6. Leave 5" opening on one side to turn the placemat right side out.
7. Press and close opening with Sealah Tape or hand stitching.

